

Mueller® Manway Closures

Paul Mueller Company manufactures manway closures in a variety of styles and sizes to fit your specific requirements. They are available for single-wall or insulated tanks, both ASME and non-ASME. All manway closures feature stainless steel construction, sanitary design, and low cost. Both standard and custom designs are available to meet all your component needs.

Mueller® — Your Single-Source Supplier for Tank Components!

OUR OPTIONS ARE ENDLESS:

- Circular or oval shaped
- Single-wall or insulated tanks
- ASME or non-ASME
- Inside or outside sealing
- Sanitary precision design
- Stainless steel construction
- High or low pressures
- Atmospheric or positive seal
- Highly polished or sandblasted finish

Model MC-1

The Model MC-1 manway closure has an inside-sealing/swing-out, insulated door which is self-centering for precision seating. The stainless steel construction, sanitary design, and low cost make it ideal for a variety of applications. 15½" x 20½". Furnished as standard: insulated door, drawbolt, hinge assembly, wing nut, draw bar, and collar. Gaskets sold separately.



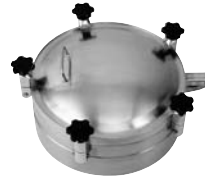
Model MC-2

The Model MC-2 manway closure has an inside-sealing/swing-out, non-insulated door which is adjustable for precision seating. The stainless steel construction, sanitary design, and low cost make it ideal for non-insulated applications. Furnished as standard: door assembly, collar and hinge assembly, arm assembly, drawbolt, wing nut, and clamp bar. Gaskets sold separately.



Model MC-3-70

The Model MC-3-70 manway closure has an inside-sealing/swing-out, insulated door which features a machined surface collar for precision seating. Stainless steel construction and sanitary design make this closure ideal for high-pressure ASME applications. 15" x 20". Furnished as standard: insulated door assembly, collar and hinge assembly, arm assembly, drawbolt, wing nut, and clamp bar. Gaskets sold separately.



Model MC-56

The Model MC-56 manway closure has a self-aligning, outside-closing door with clamp lugs and incorporates an o-ring gasket for sanitary design and positive seal. Swing-away clamp design provides quick and easy access, with the number of clamps designed for your pressure needs. 8", 12", 16", 18", 20", 24", and 30" diameters available. Furnished as standard: cover assembly, collar assembly, clevis, clamp lugs, pin assemblies, bolting, knob assembly, and #4 material finish inside and outside. Weld finish is #4 inside, buff outside. Torsion spring assist optional on 18" and 20" diameters. Gaskets sold separately.



Model MC-7

The MC-7 (18" diameter) manway closure is for use on a single-wall or insulated tank, has an outside-closing door, and is especially suitable for wine fermenting tanks or any application where the tank will contain sediments. Furnished as standard: door, hinge assembly, wing nut, and collar. Designed for side mount. Full-face and channel gaskets sold separately.



Model MC-8

The MC-8 manway closure is constructed of stainless steel and designed to meet sanitary standards. Diameters of 12", 16", 18", 20", 24", and 30" are available. Economical and easy to install, it can be used on single-wall or insulated tanks. Designed for top mount only. Furnished as standard: door, hinge assembly, quick-release handle, and collar. Gaskets sold separately.



Model MC-9

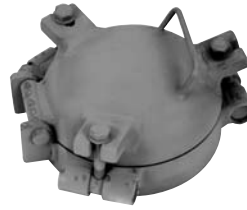
The Model MC-9 manway closure has an outside-closing door with six lugs for positive seal and is ideal for high-pressure use. Certified for D.O.T. applications, this closure can be installed in either single-wall or insulated tanks. Furnished as standard: cover assembly, collar assembly, eye bolts, wing nuts, and pin assemblies. Gaskets sold separately.

Mueller High-Pressure Manways

Mueller MC-150 manways are designed for use in high-pressure applications. They can be installed on single-wall or insulated tanks to provide easy access as well as an o-ring seal.

OUR OPTIONS ARE ENDLESS:

- Circular shape
- O-ring gasket provides positive seal
- Stainless lugs and hinges
- Type 316L product contact surface
- Machine groove for o-ring gasket
- Teflon® encapsulated gaskets
- Sanitary design
- Optional spring assist
- High pressure
- Full vacuum



Model MC-150

8" Diameter (3 lug):
ASME



Model MC-150

12" Diameter (5 lug):
ASME



Model MC-150

18" Diameter (6 lug):
ASME



Model MC-150

24" Diameter (8 lug):
ASME

Paul Mueller Company
is your single-source
supplier for tank
components!

Nominal Pipe Size (in)	Nominal Wall Thickness	OD (in)	ID (in)	No. of Bolts	Bolt Size (in)	Approximate Weight (lbs)
8	.500	8 ⁵ / ₈	7 ⁵ / ₈	3	1/2	24
12	.500	12 ³ / ₄	11 ³ / ₄	5	3/4	60
18	.500	18	17	6	3/4	101
24	.500	24	23	8	7/8	180

MUELLER®

P.O. Box 828 • Springfield, Missouri 65801-0828, U.S.A.
Phone: (417) 575-9000 • 1-800-545-5224 • Fax: (417) 575-9898
www.muel.com • E-mail: components@muel.com