

# 9-16 4 x 8 Falling Film Chiller Submittal



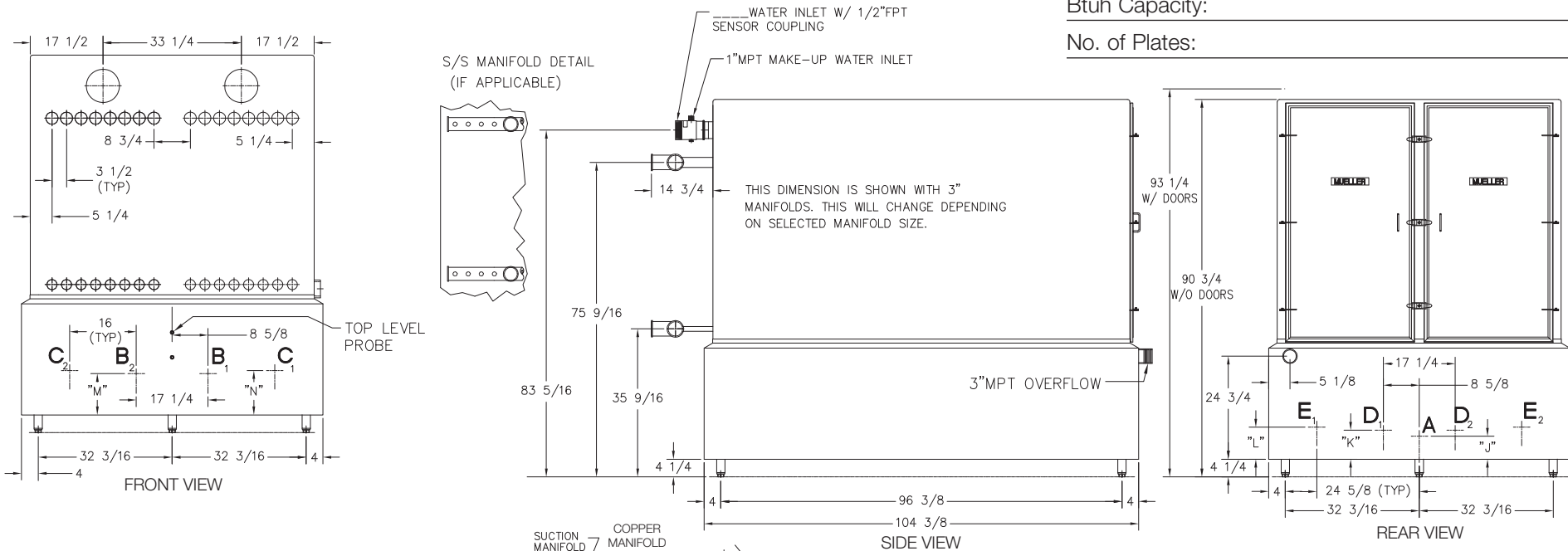
Model No.: \_\_\_\_\_

Refrigerant Type: \_\_\_\_\_

Evaporator Temp.: \_\_\_\_\_

Btuh Capacity: \_\_\_\_\_

No. of Plates: \_\_\_\_\_



Tank Outlet Location and Size Required:

A: \_\_\_\_\_ B1: \_\_\_\_\_ C1: \_\_\_\_\_ D1: \_\_\_\_\_ E1: \_\_\_\_\_

B2: \_\_\_\_\_ C2: \_\_\_\_\_ D2: \_\_\_\_\_ E2: \_\_\_\_\_

TANK OUTLET SIZE	USABLE TANK CAPACITY					REAR A	FRONT B1 & B2	FRONT C1 & C2	REAR D1 & D2	REAR E1 & E2
	"J"	"K"	"L"	"M"	"N"					
12"RFSO FLG	7.5625"					260 gal				
10"RFSO FLG	6.5625"					319 gal				
8"RFSO FLG	5.5625"	5.9375"				379 gal		368 gal		
6"RFSO FLG	4.5625"	4.9375"	5.625"	8.9375"	9.625"	437 gal	309 gal	288 gal	426 gal	406 gal
4"MPT	3.375"	3.75"	4.5"	7.75"	8.5"	485 gal	378 gal	356 gal	479 gal	468 gal
3"MPT	2.9375"	3.3125"	4"	7.3125"	8"	498 gal	405 gal	385 gal	493 gal	483 gal

S/S MAT'L TYPE	MAX SHIP WEIGHT (LBS)	MAX OPERATING WEIGHT (LBS)
R-22	304	5,220
R-717	304	5,220

**NOTES:**

- DO NOT FABRICATE FROM THIS DRAWING, ALL DIMENSIONS ARE SUBJECT TO CHANGE WITHOUT NOTICE.
- ALL DIMENSIONS ARE IN INCHES UNLESS SPECIFIED OTHERWISE.
- (9) NINE FOOT SERVICE SPACE REQUIRED, AT REAR OF FALLING FILM CHILLER ASSEMBLY TO PULL DISTRIBUTION PAN AND TEMP-PLATES.
- SUPPORT LEGS CAN BE ADJUSTED A FULL 2".
- PAUL MUELLER COMPANY IS NOT RESPONSIBLE FOR CORROSION OR SUITABILITY FOR USE OF ANY MATERIAL IN ANY PARTICULAR APPLICATION. THE CORROSION RESISTANCE AND SUITABILITY FOR USE OF A MATERIAL IS DEPENDENT ON OPERATING ENVIROMENT AND CONDITIONS, CLEANING PRACTICES AND MANY OTHER FACTORS BEYOND THE CONTROL OF THE EQUIPMENT FABRICATOR. THE USER OF THE EQUIPMENT BEARS TOTAL RESPONSIBILITY FOR CORROSION OR SUITABILITY FOR USE OF ALL MATERIALS IN THEIR PARTICULAR APPLICATION.

a) TOTAL TANK CAPACITY TO TOP LEVEL PROBE IS 525 GALLONS.